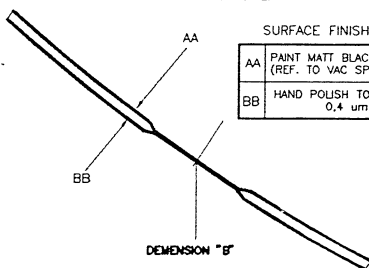
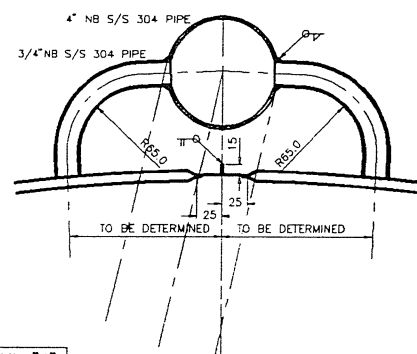


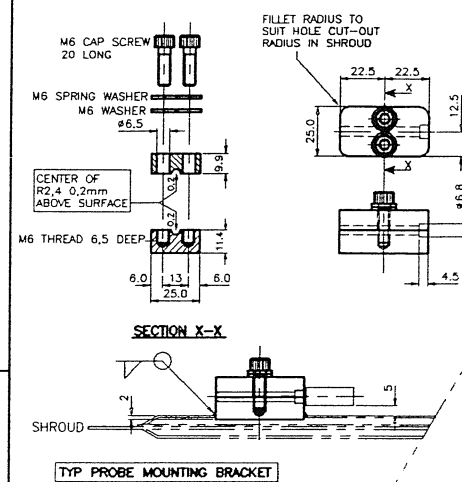
SURFACE FINISH	
AA	PAINT MATT BLACK (REF. TO VAC SPEC)
BB	HAND POLISH TO 0,4 $\mu$ m



VIEW "A"

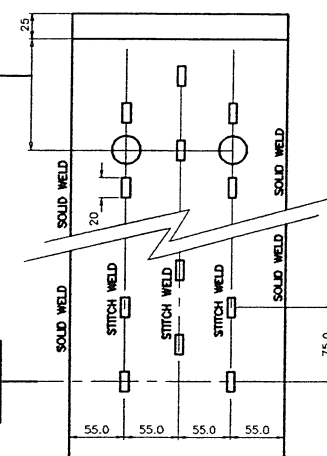


DETAIL "A"

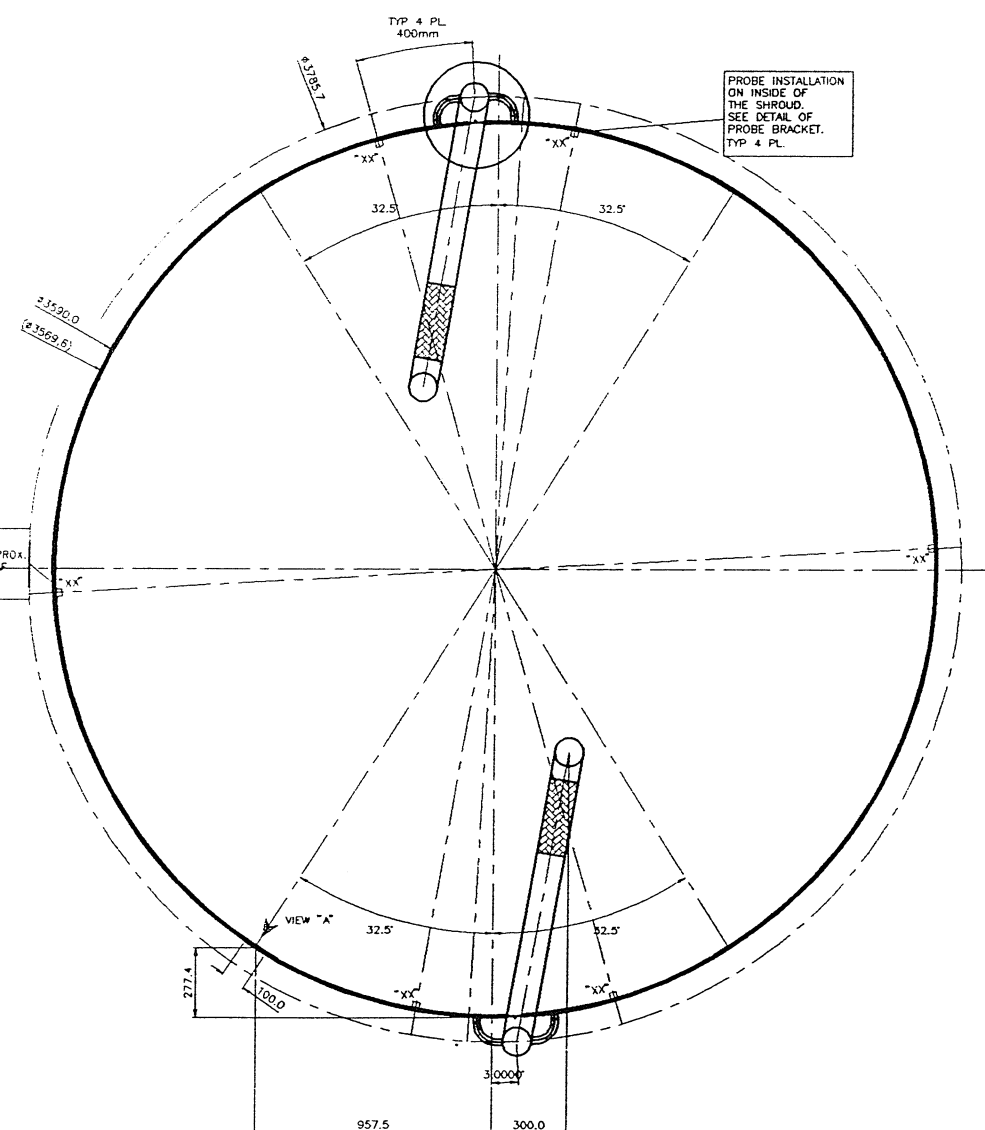
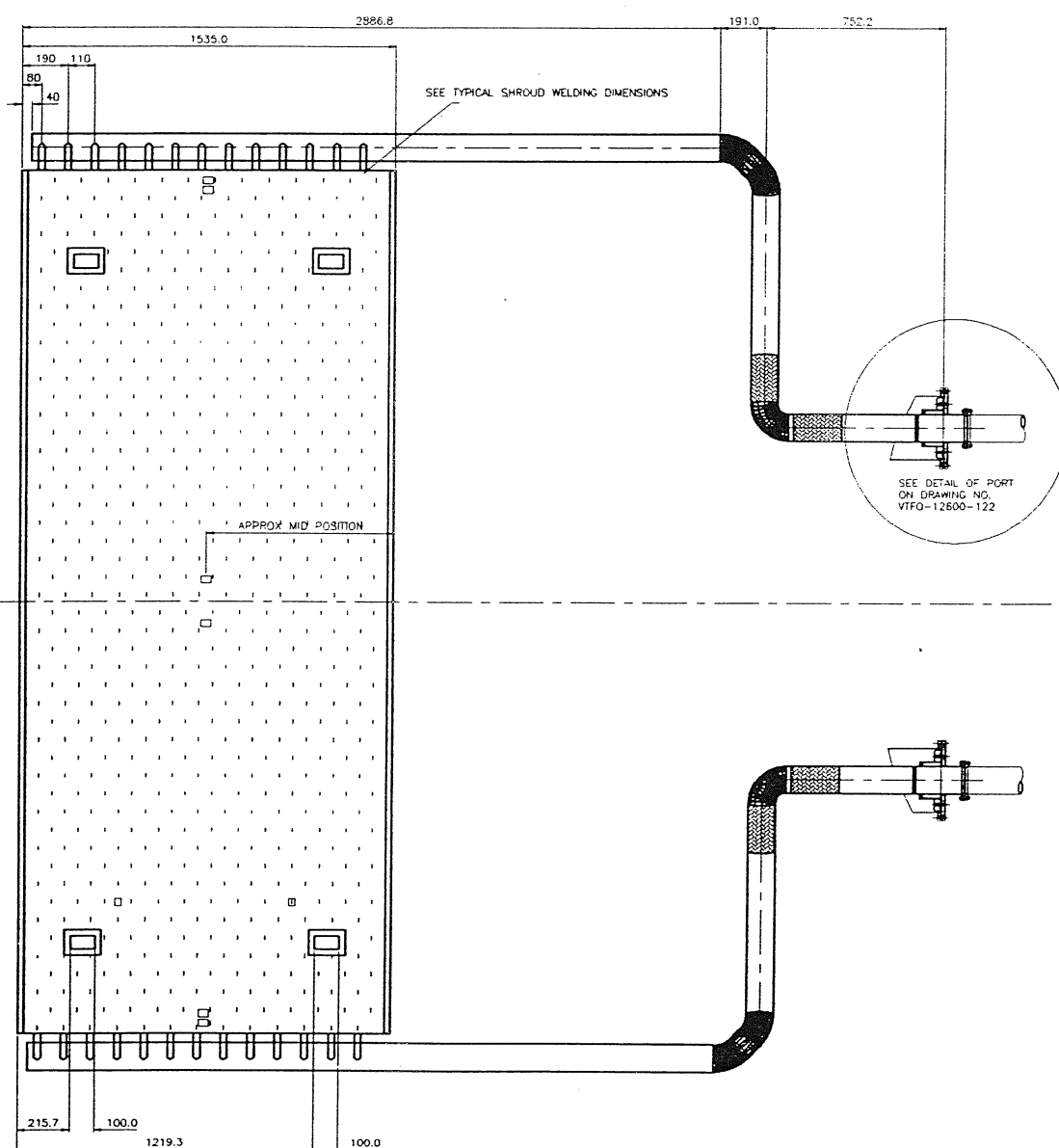



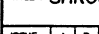
SEE SPECIFIC DIMENSIONS  
ON SHEET 2 OF 2

CENTER LINE  
OF SHROUD TO  
BE USED TO START  
STITCH WELDING  
PER DIMENSIONS



TYPICAL SHROUD WELDING DIMENSIONS



NOTES (UNLESS OTHERWISE STATED)				MATERIAL		SPECIAL TOLERANCES	
1) REMOVE ALL BURRS & SHARP EDGES TO .003" MAX.				ALL INTERNAL RADIUS 0.3" MAX.		STAINLESS STEEL 304	
2) SCREW THREADS TO ISO 9339						2 X .1	
3) SURFACE FINISH TO 3.2 μm (Ra TO ISO 1302)						ALL ANGLES	
93-1-28						+0.005	
92-8-27		+0.001					
92-3-7				TO SABS 0111		+0.001	
92-8-30				DISC NO. VITFO12C NAME		DRG NO: VITFO-12300-122	
FF. VITFO12C				SCALE: 1:10		SHT 1 OF 1	
						DRAWN BY: [signature]	